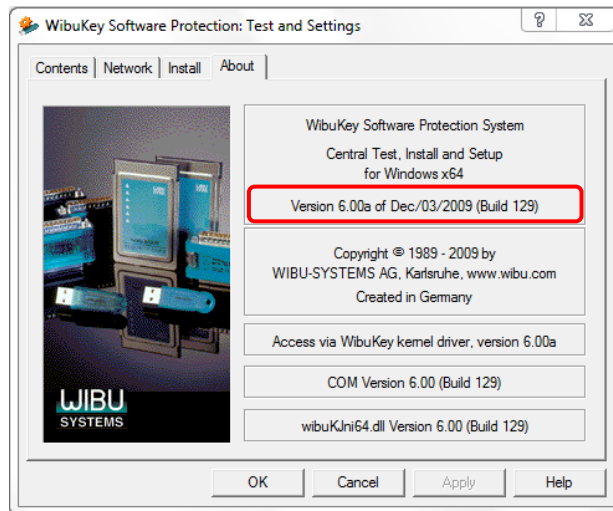


USB Driver Upgrade

General Notes:

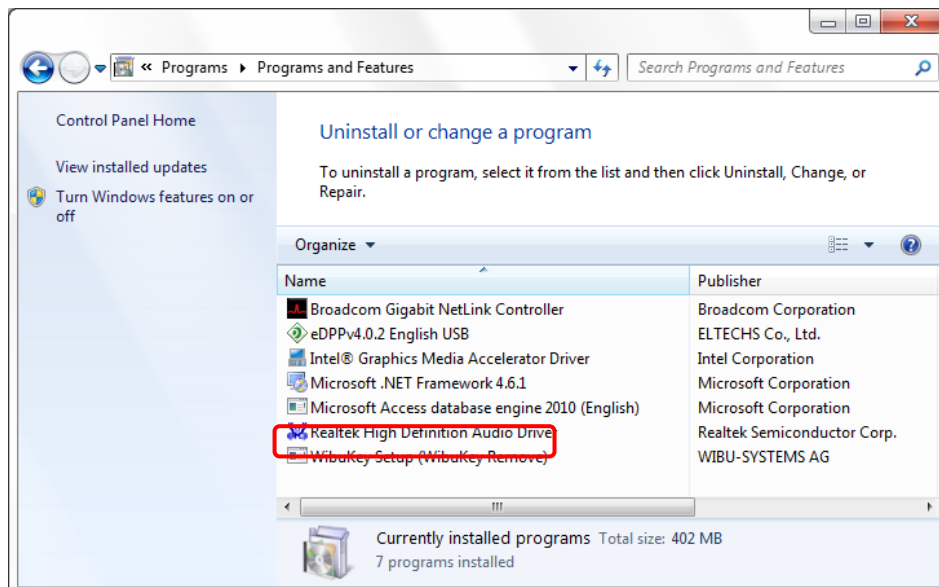
The version of the USB driver may be verified through the following steps:

- i. Locate “**Control Panel**”.
- ii. On the “Control Panel” applet, click “**Hardware and Sound → WibuKey**”.
- iii. On the “Wibukey Software Protection: Test and Settings” view, select “**About**” tab to display the version of the USB driver installed. For example:



I. De-Installation of the Old USB Driver

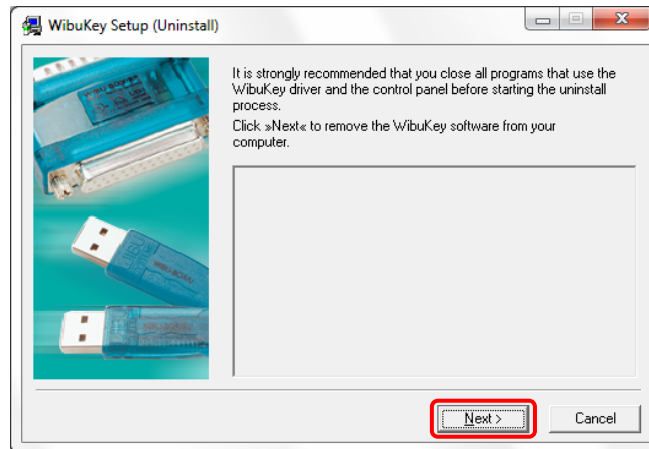
- 1) Locate “**Control Panel**”.
- 2) On the “Control Panel” (view by “Category”) applet, click “**Programs → Programs and Features**”.
- 3) Locate and select the “**WibuKey Setup (WibuKey Remove)**” from the list.



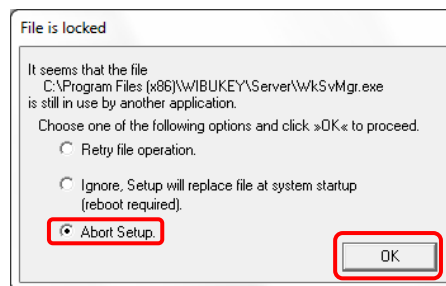
- 4) Click “**Uninstall/Change**” button, “WibuKey Setup (Uninstall)” dialog will be displayed.

USB Driver Upgrade

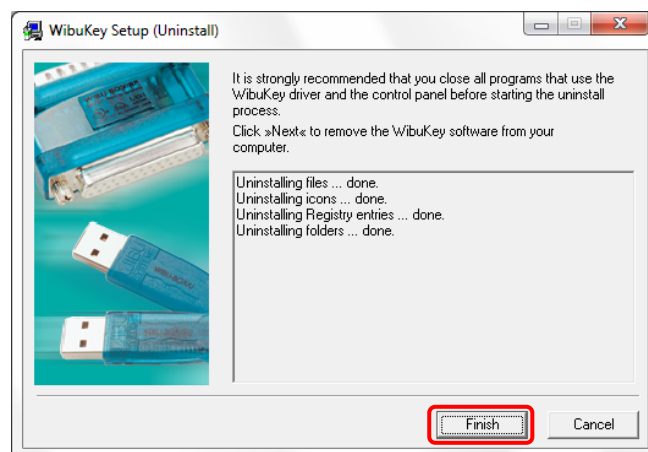
5) Click “**Next**” button to continue de-installation process.



Note: When the “File is locked” dialog as shown below is displayed, select “**Abort Setup**” option and click “**OK**” button. Restart your computer and proceed with step “1)” above.



6) Click “**Finish**” button to confirm successful de-installation.



7) You may now install the New USB Driver. (Refer to Installation of New USB Driver below)

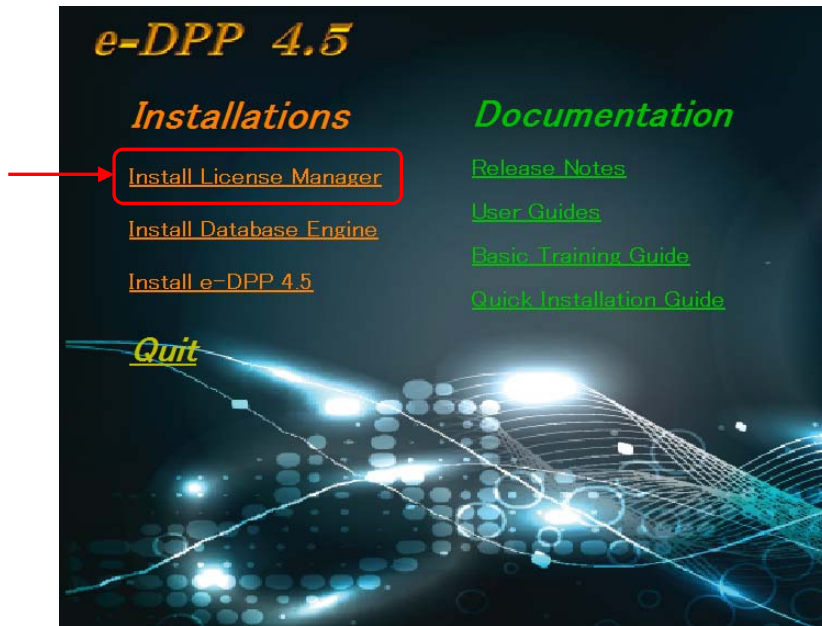
USB Driver Upgrade

II. Installation of the New USB Driver (Version 6.32)

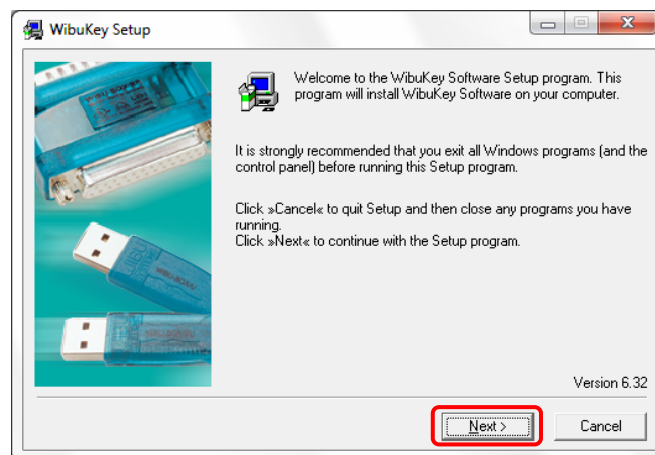
- 1) Insert the “e-DPP 4.5.0 Installation CD” into the CD/DVD Drive of the computer. The installer program will auto-start.

If the installer program does not auto-start, browse the CD, locate and double click “**eDPPInstaller.exe**”

- 2) On e-DPP main installation dialog box (“Installations” column), click “**Install License Manager**” button.

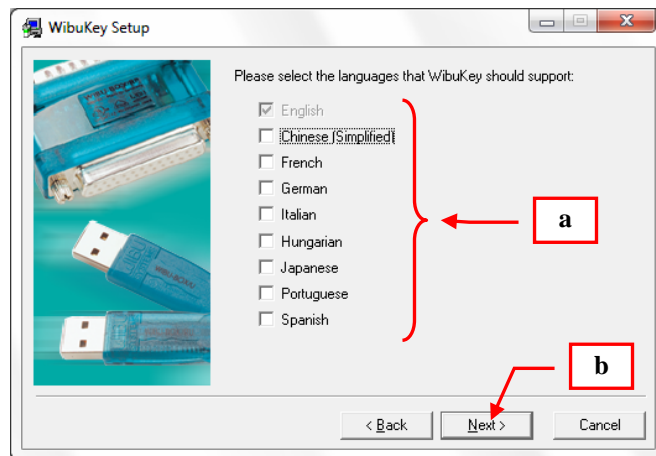


- 3) On “WibuKey Set-up” dialog box, click the “**Next**” button.

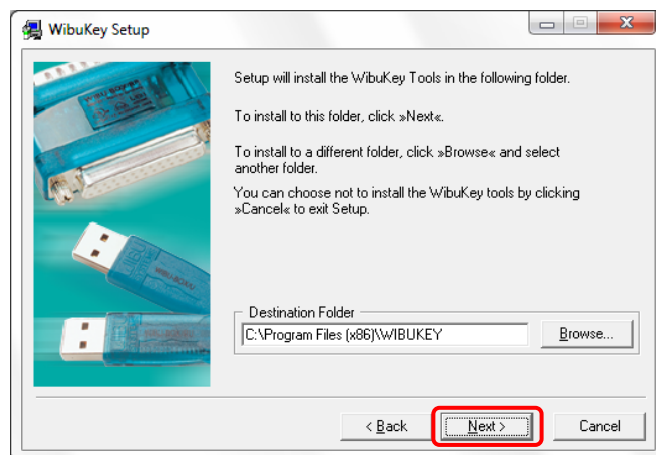


USB Driver Upgrade

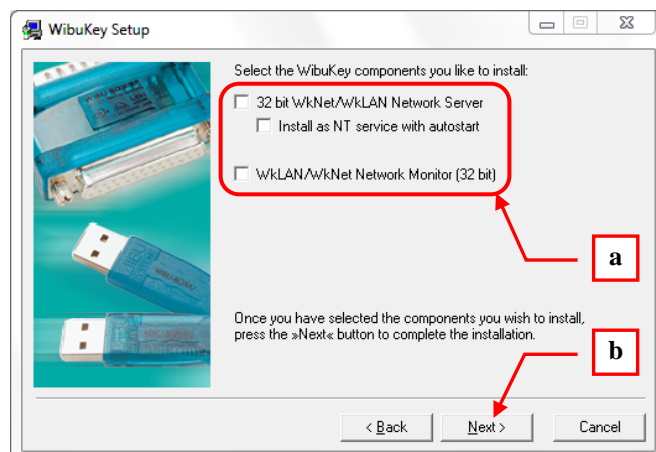
- 4) The following dialog box will be displayed.
 - a. Check the additional language as necessary.
 - b. Click the “Next” button.



- 5) Click “Next” to continue.

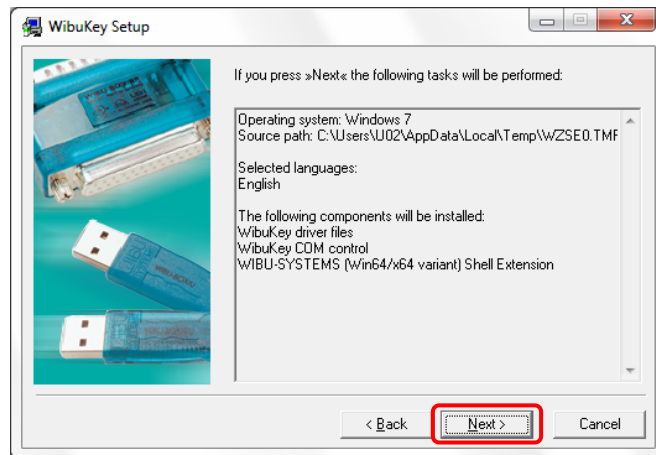


- 6) Click “Yes” on the succeeding dialog to confirm creation of the folder.
- 7) On the succeeding dialog box, do the following:
 - a. Uncheck all the options
 - b. Click “Next” to continue.

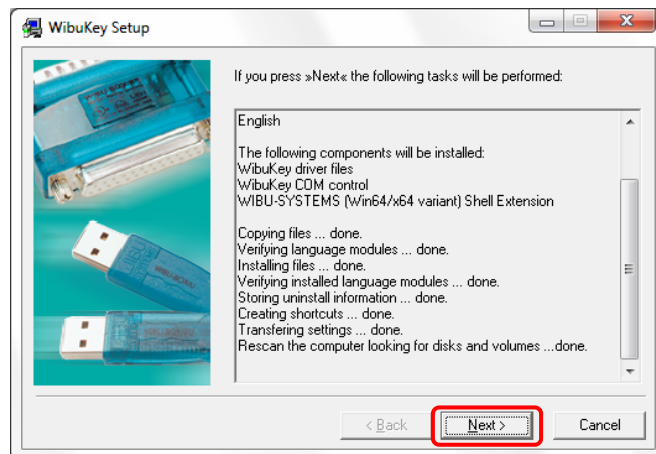


USB Driver Upgrade

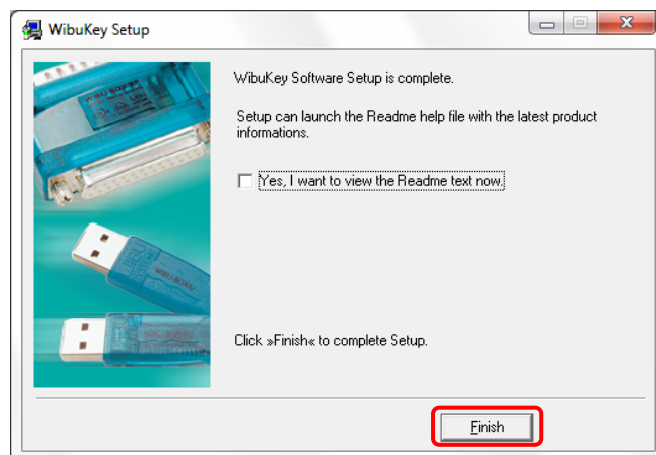
8) Click “Next” to install the components.



9) Click “Next” to proceed.



10) Click “Finish”



11) Click “OK” to confirm successful installation.

12) Confirmed that USB driver version must be version 6.32, refer to General Notes above.

13) You may insert USB key. Generally, Windows will automatically detect the USB key upon insertion to the USB hub. Run e-DPP 4.5.0 program.