

USB Key Activation (Update Context File)



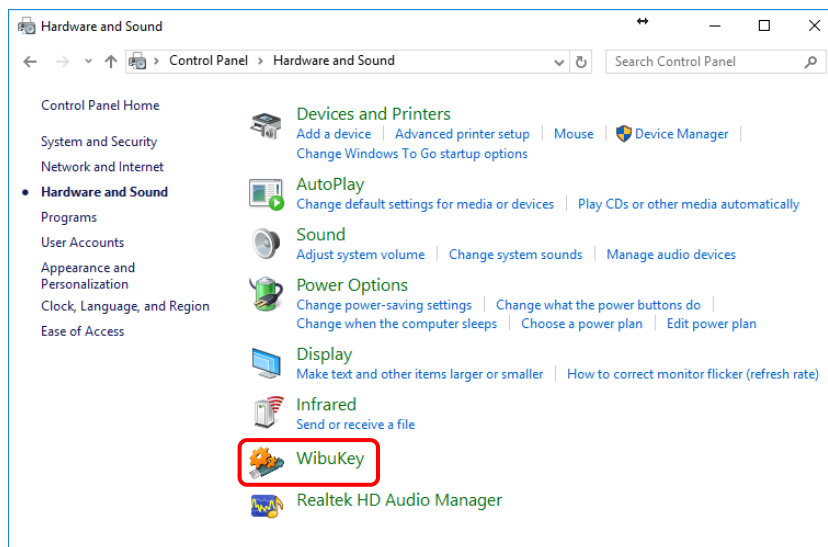
In order to run e-DPP 4.5.0 using the existing USB security key (used on previous versions of e-DPP, version 3.x series and earlier), the USB key should be activated first according to the following procedures:

IMPORTANT

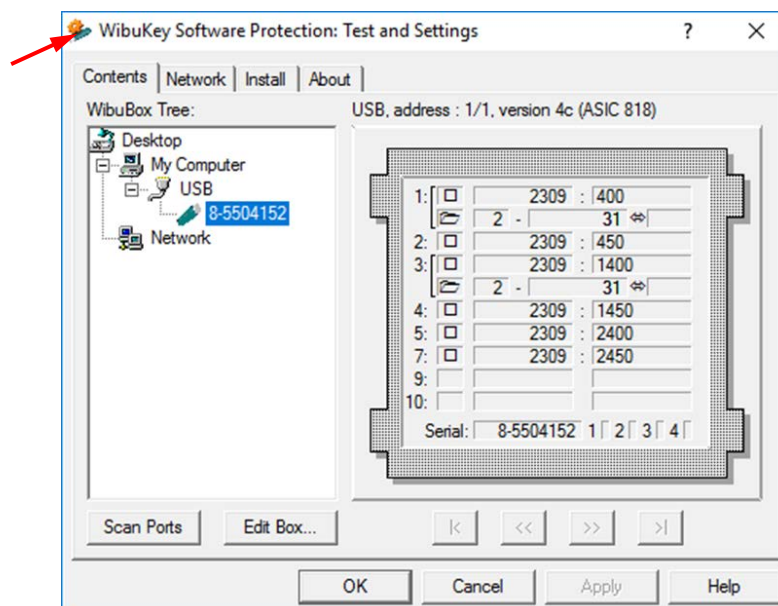
- i. Once the USB key has been activated (the below procedure has been performed) for e-DPP 4.5.0, the said key will not be able to use in running the old versions of e-DPP (3.x series and earlier).
- ii. The USB security key driver must be upgraded (compatible with the installed e-DPP version, i.e. version 6.32 for e-DPP 4.5.0) before performing the procedure below. Refer to “USB Driver Upgrade” that can be found on the e-DPP 4.5.0 Installation CD for guidelines.

I. Generating the Context File

- 1) Insert e-DPP USB key to the computer.
- 2) Locate “**Control Panel**”.
- 3) On the “Control Panel” (view by “Category”) applet, click “**Hardware and Sound** → **WibuKey**”.



- 4) Click on the “**WibuKey icon**” on the title bar of the WibuKey Control Panel Applet and select “**Advance Mode**”. All hidden tabs will be displayed.

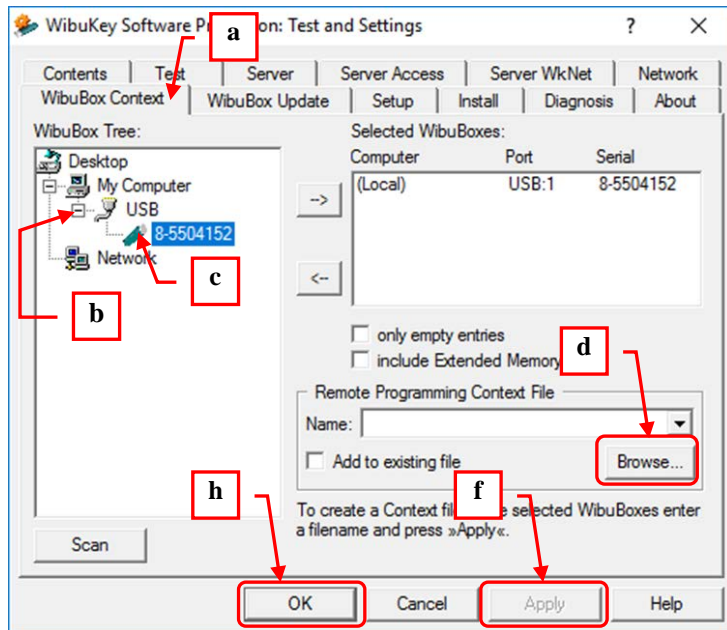


USB Key Activation (Update Context File)



5) On the “WIBU-KEY” control panel applet, do the following:

- a. Select Tab “**WibuBox context**”.
- b. Expand the “**USB**” node in the “WibuBox Tree” pane.



- c. Click the USB image
- d. Click “**Browse**” button in the “Remote Programming Context File” frame.
- e. Specify a filename in the “Save As” dialog box.

Use the USB key tag number (printed on the face of the key) as the filename.

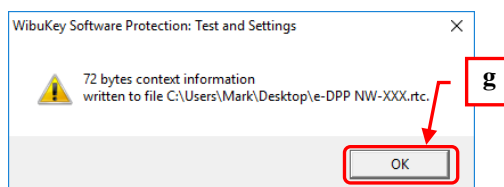
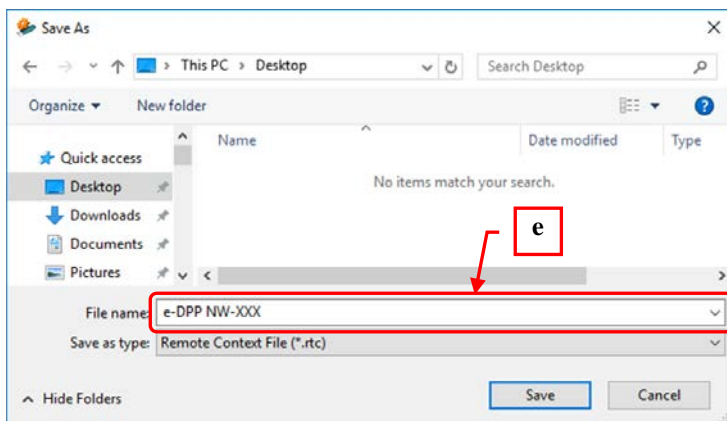
Note: It is the user prerogative to select a location (folder) where he wants to save the file.

- f. Click “**Apply**” button on the “WIBU-KEY” control applet.
- g. Click “**OK**” on the subsequent warning message dialog box.

A file with extension name “.rtc” will be generated in the folder you specified in the “Remote Programming Context File” frame. This is the “Context File”.



- h. Finally, click “**OK**” button to close “WIBU-KEY” control panel applet.



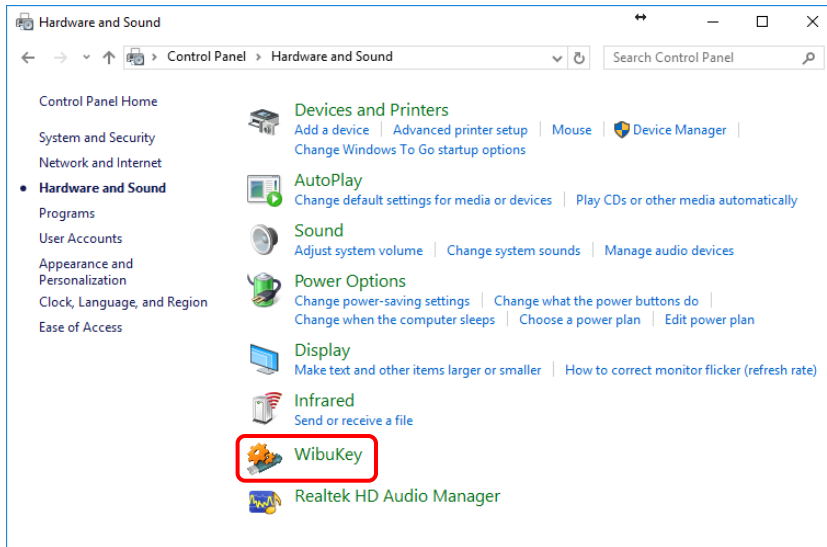
- 6) Repeat the above procedure (Step 1 to 5) for each e-DPP USB key you want to upgrade to e-DPP 4.5.0.
- 7) Send all the generated context files via email to etap2@eltechs.co.jp
- 8) Eltechs will update the Context file(s) and will send you the updated file(s) in return. When you received the updated “Context File(s)”, save it (them) in the desired folder and proceed to “**II. Key Activation**” as follows.

USB Key Activation (Update Context File)



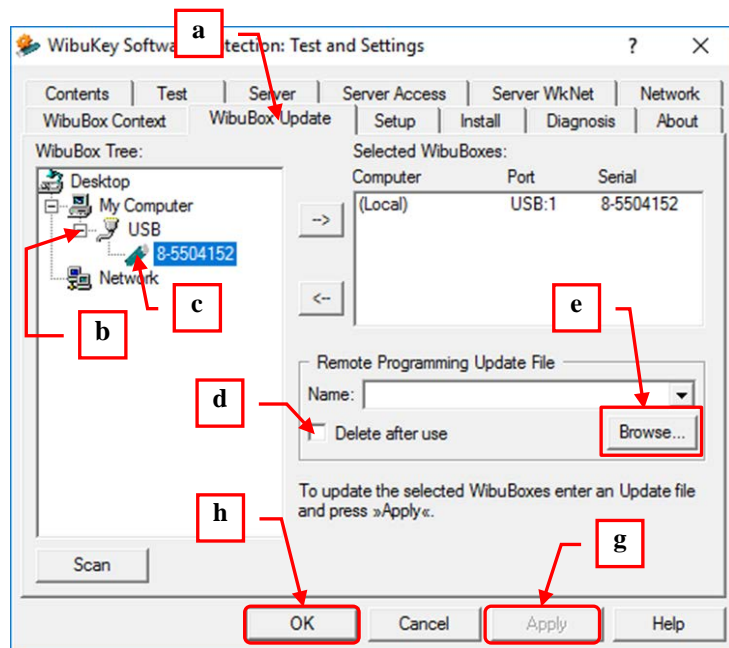
II. Key Activation

- 1) Insert the USB key (the same USB key used in step 1 in “I. Generating Context File”) to the computer.
- 2) Insert e-DPP USB key to the computer.
- 3) Locate “Control Panel”.
- 4) On the “Control Panel” (view by “Category”) applet, click “Hardware and Sound → WibuKey”.



- 5) On the WibuKey control panel applet, do the following:

- a. Click “WibuBox Update” tab.
- b. Expand the “USB” node in the “WibuBox Tree” pane.
- c. Click the USB image
- d. Check the “Delete after use” option.
- e. Click “Browse” button in the “Remote Programming Update File” frame.
- f. Browse for the Update File (with file extension name “.rtu”) which has been sent by Eltechs via email.
- g. Click “Apply” button.
- h. Click “OK” button to close the control applet.



- 6) Your USB key is now updated and ready to use.
- 7) Repeat Step 1 to 5 to activate other USB Keys.