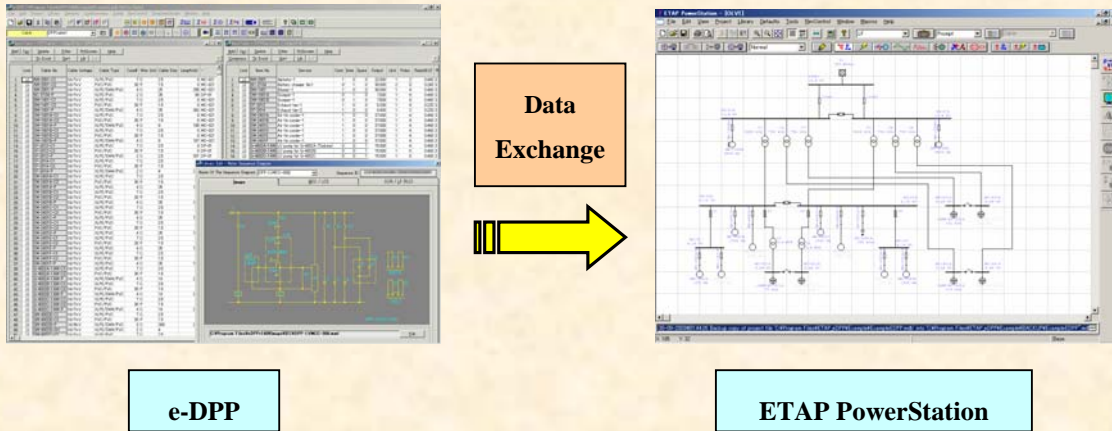


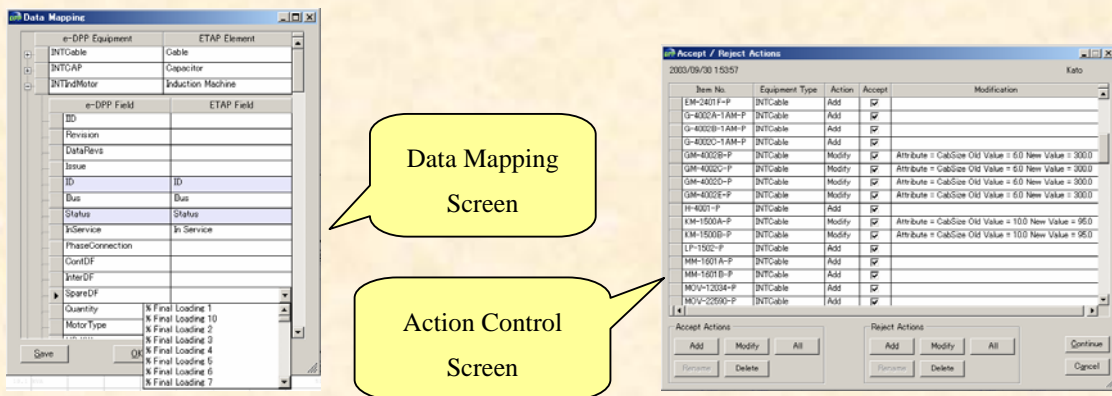
Let's make full use of e-DPP / ETAP-DPP.

Welcome to ETAP-DPP! (Topic #005)

ETAP-DPP is a data interface module which facilitates data exchange between ETAP PowerStation[®] and e-DPP. It was released last month in Japan after one year development with OTI.



ETAP-DPP exports electric load data created by e-DPP or Lumped Load which are to be used by power cable or ETAP analysis, to ETAP. Load summary feature which determines the Lumped Load capacity is equipped with e-DPP.



When you actually export the data, field co-relation between e-DPP and ETAP can be setup freely by users. Changed/Added/Deleted data comparing with previous data are reported from you export second times. User can select if user want to export or not per item by item, so that very flexible operations are possible. (Action Control feature)

The next issue discuss “Utilize User Defined Table”.

If you have problems or requests and need solutions, please feel free to contact;

Eltechs Engineering & Consulting Inc.

E-mail: etap@eltechs.co.jp