

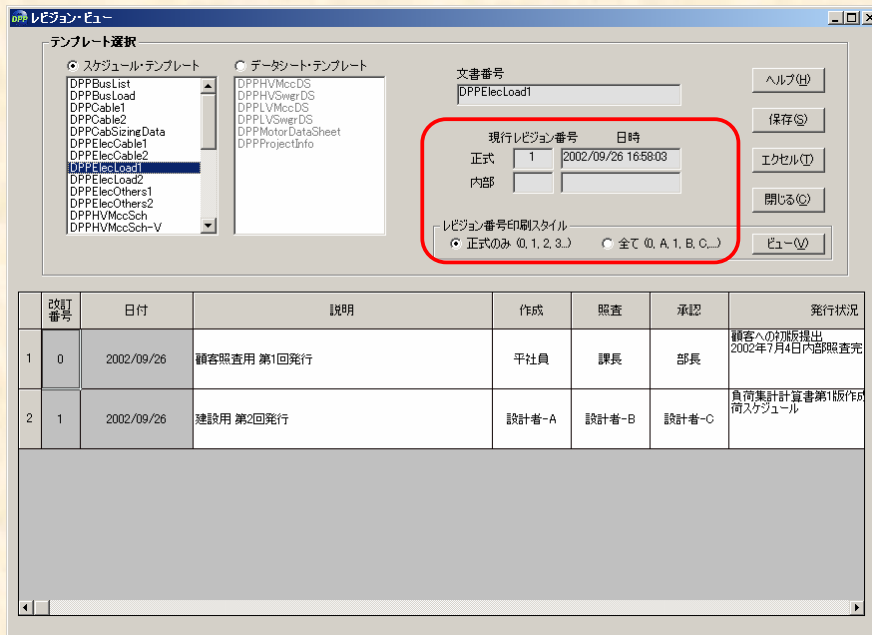
Let’s make full use of e-DPP / ETAP-DPP.

How to use “Revision Control” (Topic #010)

Part 1: How to create Revision History.

Standard formats are provided for Motor Schedule, Cable Schedule and various Data Sheet in e-DPP and Revision history can be controlled individually.

<Official Numbers and Internal Numbers>



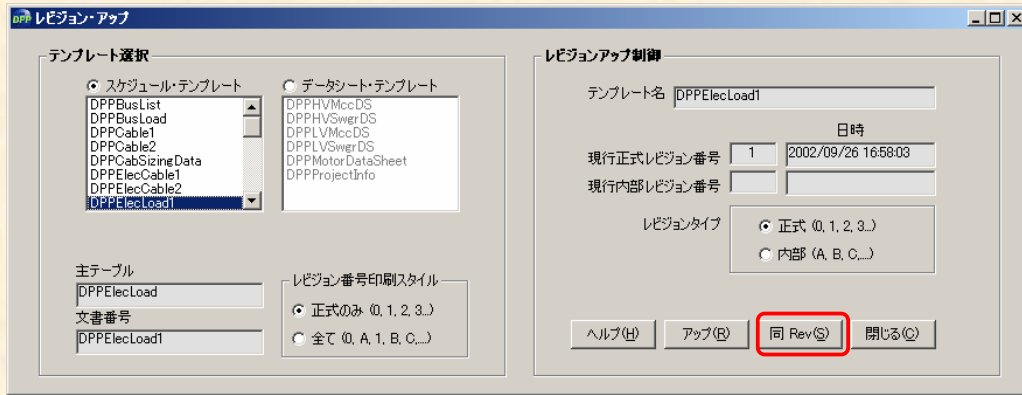
Revision history is created by counting up the revision numbers and you can use both **official no.** and **internal no.** (Refer to the above figure.) **Official no.** is the one for deliverables to be submitted to customers and numbers (0, 1, 2) are used. **Internal no.** uses Alphabet (A, B, C), and is the one used in-house control. This is the minor revision numbers before / after the official revision numbers to record the minor revision history such as below.

Rev. date	Mar. 13	Mar. 31	Apr. 14	May 25	May 31	Jul. 13	Aug. 15	Sep. 12
<b>Official</b>	<b>0</b>	—	—	<b>1</b>	—	—	—	<b>2</b>
<b>Internal</b>	—	<b>A</b>	<b>B</b>	—	<b>C</b>	<b>D</b>	<b>E</b>	—

Data sheet shows revision history in the bottom. You can choose if you want to show **internal no.** at the same time or not. This selection is done in the “Revision No. Print Style” in the “Revision Up” or “Revision View”.

(Continue to next page)

<The same Revision No.>



There is a “The same Rev” button in the “Revision Up” display. This is provided to rescue the case that the official revision was counted up by mistake. For example, if a minor revision occurs immediately after the official revision was increased to “2”, you do not wish to increase the revision number further, you can push “The same Rev” button to maintain the revision number “2”.

<Print Revision Number>

Let us check revision history after the operations above in the data sheet.

改訂番号	日付	説明	作成	照査	承認
2	2003/9/12	完成図書 第3回発行	部長	本部長	専務
1	2003/5/25	建設用 第2回発行	平社員	課長	部長
0	2003/3/13	顧客照査用 第1回発行	平社員	課長	部長

When “Official Revisions Only”

D	2003/7/13	起動電流と起動力率の変更	平社員	課長	部長
C	2003/5/31	モーターメーカーに置換え	平社員	課長	部長
1	2003/5/25	建設用 第2回発行	平社員	課長	部長
B	2003/4/14	オフサイトエリアのモータ仕様を非防爆へ変更	平社員	課長	部長
0	2003/3/13	顧客照査用 第1回発行	平社員	課長	部長
改訂番号	日付	説明	作成	照査	承認

When “All Revision”

The latest information only will be maintained for the same revision numbers which “The same Rev” button are pushed more than twice.

The next issue will discuss “How to use Revision Control Part 2: How to create Revision List”.

If you have problems or requests and need solutions, please feel free to contact;

Eltechs Engineering & Consulting, Inc. Mr. Kameda E-mail address: [etap@eltechs.co.jp](mailto:etap@eltechs.co.jp)