

## Let's make full use of e-DPP / ETAP-DPP.

### How to use “Revision Control” (Topic #011)

#### Part 2: How to create Revision List

This issue discusses “How to use Revision Control” Part 2 in **e-DPP**. Previous issue discussed Revision History, i.e. how to count up and control revision numbers.

How to deal with actual Revision Data (what has been changed comparing with previous revision) is discussed herewith. Revision List is a summary of Revision Data. Note that Revision List is created for the official revision numbers \*<sup>1</sup> and is not created for internal revision numbers. (\*<sup>1</sup> Refer to the previous Technical Report no. 10.)

#### <Example>

Open a template name DPPElecLoad1 in Example2 e-DPP project to change, add and operate following.

- (1) Change output kW of equipment no. AM-2001 from 22kW to 110kW.
- (2) Add a new equipment no. EM-1000 (New Heat Exchanger).

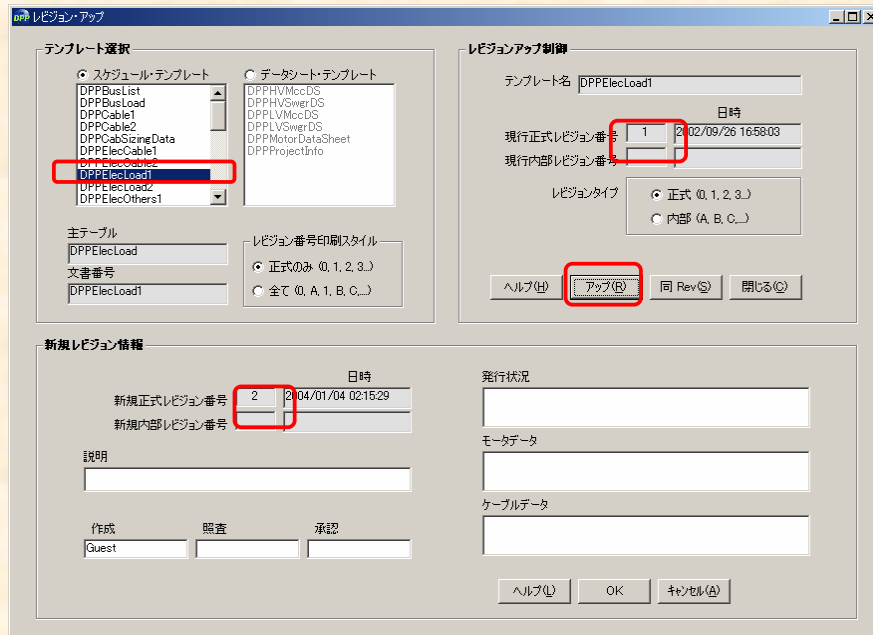
	Lock	機器番号	サービス	連続	間欠	予備	出力	単位	極数
1	<input type="checkbox"/>	AM-2001	攪拌機-1	1	0	0	110.000	1	2
2	<input type="checkbox"/>	BC-E104	バッテリー充電器 No.1	0	1	0	30.000	2	0
3	<input type="checkbox"/>	BM-1401	送風機-1	1	0	0	30.000	1	4
4	<input type="checkbox"/>	DM-1001A	ダンパー-1	0	1	0	7.500	1	6
5	<input type="checkbox"/>	DM-1001B	ダンパー-1	0	1	0	7.500	1	6
6	<input type="checkbox"/>	EF-2612	排気扇-1	1	0	0	0.200	1	4
7	<input type="checkbox"/>	EF-2614	排気扇-2	1	0	0	0.400	1	2
8	<input type="checkbox"/>	EM-1000	新設熱交換器	1	0	0	0.000	1	0
9	<input type="checkbox"/>	EM-2401A	熱交換器-1	1	0	0	37.000	1	4
10	<input type="checkbox"/>	EM-2401B	熱交換器-1	1	0	0	37.000	1	4
11	<input type="checkbox"/>	EM-2401C	熱交換器-1	1	0	0	37.000	1	4

Save revision data and select “Revision Up” from menu “Revision Control”.

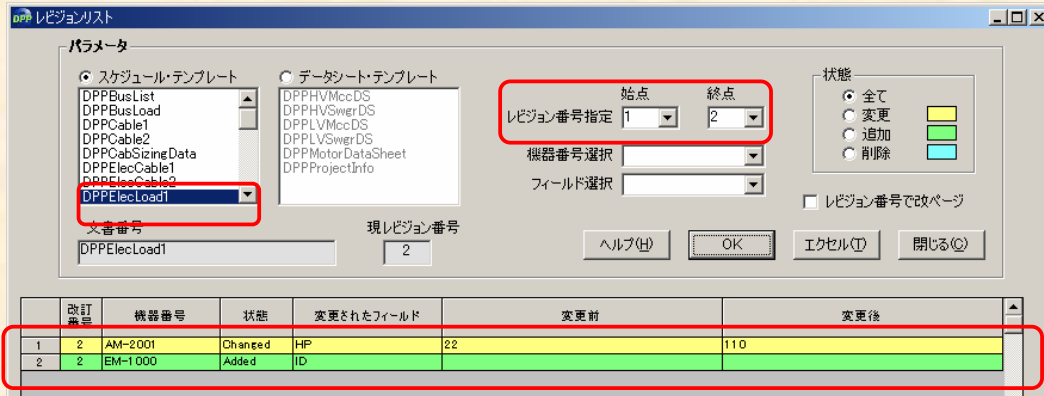
Select a schedule template, DPPElecLoad1. You will see an official revision no. 1. Push “Up” button and display the window to count up to Rev.2.

Remarks: Revision Data are recorded per document categories. For example, when kW for the same motor is changed, Motor Schedule and Cable Schedule can record such a change as individual revision numbers which are different.

(Continue to next page)



Push OK button without entering anything in the Description. You will see an official revision no. 2. Select “Revision List” from “Revision Control”. Select DPPElecLoad1 from Schedule template and click OK button.



As you can see from above, additional and/or changed data are listed from Rev.1 to Rev.2. This extraction of change results can be exported to EXCEL pushing the “Excel” button.

[Note] Controlling Revision List may become difficult, since a lot of (several hundreds to thousands) changes may occur at revision up after Rev. 0 operating following 3 steps.

- (1) External data import
- (2) Data filling
- (3) Cable Sizing

Therefore it is important such operations are done before counting up to Rev.0 as much as possible.

From next issue on, “Key points for Load Summary” will be discussed.

If you have problems or requests and need solutions, please feel free to contact;  
**Eltechs Engineering & Consulting Inc. Mr. Kameda** E-mail: [etap@eltechs.co.jp](mailto:etap@eltechs.co.jp)