

Let’s make full use of e-DPP / ETAP-DPP.

“Template Design” (Topic #018)

Part 1: User Defined Schedule Sheet

“Template Design” which is one of the powerful features of **e-DPP** is discussed from this issue on. “Template” is like a “Media” which co-relates 3 objects, i.e. e-DPP database, Edit Display and Excel sheet. To be more specific, it is configured by 2 tasks, i.e. ① Creating EXCEL sheet and ② Co-relation of data fields.

There are 3 template formats which are handled by e-DPP.

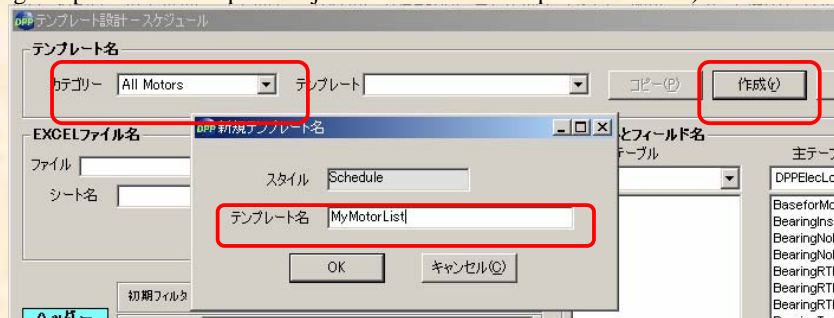
1. **Schedule Sheet** (Multiple Table Format)
2. **Data Sheet** (Single Table Format)
3. **Schedule Type Data Sheet** (Mixed Format)

This issue discusses how to create “**Schedule Sheet**” from them. When user creates template, one method is to copy standard data sheet which already exists in e-DPP and another method is to create from a scratch. How to create a “New” template for a simple Schedule Sheet is described as follow. (For procedures to copy existing template and a new, refer to “Welcome to e-DPP – Applications” which is included in the e-DPP Installation CD.)

Create a simple EXCEL Sheet as below figure and save with any name. Green cells denote Title and database contents are output into yellow cells.

| | A | B | C | D | E | F | G |
|----|---|-----------------|----|--------|------|---|---|
| 1 | | | | | | | |
| 2 | | PROJECT TITLE : | | | | | |
| 3 | | | | | | | |
| 4 | | MOTOR ID | KV | OUTPUT | POLE | | |
| 5 | | | | | | | |
| 6 | | | | | | | |
| 7 | | | | | | | |
| 8 | | | | | | | |
| 9 | | | | | | | |
| 10 | | | | | | | |
| 11 | | | | | | | |

Run e-DPP and select “Schedule” from menu “Template Design”. Below figure, select “All Motors” from “Category” at above left and push Create button at right. Then enter “MyMotorList” in the Template Name and push OK button. (Existing sample data “Example2 Project” is used for description hereafter.)



(Continue to next page)

Retrieve EXCEL file that has just been created and setup data offset as below figure. Select Sheet 1 if you did not specify sheet name when you created EXCEL file.

Select “DPPPprojectRec” from the pull down list of the common table and drag “ProjectTitle” and drop to Cell no. [C2] in the EXCEL Header. (Note: Before you drag & drop, click the objective field once and release your finger from the mouse. Because keeping-on-pushing the left button is recognized as multiple field selection mode.)

Drag & drop following 4 fields into data portion from the Main Table.

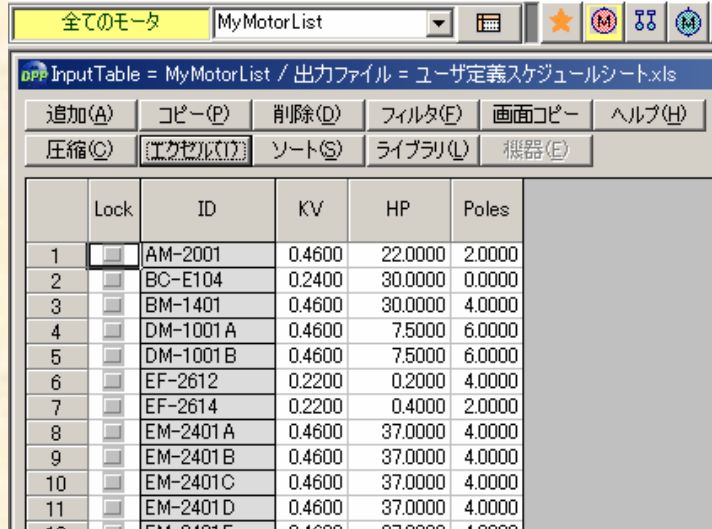
- ID (Motor No.)
- KV (Rated Voltage)
- HP (Rated Output)
- Poles (Number of Poles)

| データ | | 挿入 | 削除(D) | |
|--------|--------------|--------------|--------------|--------------|
| | A | B | C | D |
| ファイル | Example2.mdb | Example2.mdb | Example2.mdb | Example2.mdb |
| テーブル | DPPElecLoad | DPPElecLoad | DPPElecLoad | DPPElecLoad |
| フィールド | ID | KV | HP | Poles |
| データタイプ | 10:dbText | 7:dbDouble | 7:dbDouble | 7:dbDouble |
| タイトル | ID | KV | HP | Poles |
| 小数桁 | 0 | 4 | 4 | 4 |
| 式 | | | | |

Double clicking the Title allows you to enter any texts. Title texts edited here appear at Title row of the e-DPP Edit Display. When you edit “a few rows”, it is possible to adjust the decimal points which appear on the Edit Display. (Note: EXCEL output sheet will follow “Cell Format” in the EXCEL.

Once you complete the above operations, close the “Template Design” by pushing the Save button.

Select the User Defined Template “MyMotorList” just created by executing “All Motors” from Menu “Edit”. Edit Display for only 4 fields you selected will appear when you open the template.



Then, if you click OK in the Output Condition Setting Display, following database contents will be displayed on the EXCEL sheet you made.

| | A | B | C | D | E | F | G | H |
|----|---|---------------------------|------|--------|------|---|---|---|
| 1 | | | | | | | | |
| 2 | | PROJECT TITLE : 電気設備データ処理 | | | | | | |
| 3 | | | | | | | | |
| 4 | | MOTOR ID | KV | OUTPUT | POLE | | | |
| 5 | | AM-2001 | 0.46 | 22 | 2 | | | |
| 6 | | BC-E104 | 0.24 | 30 | 0 | | | |
| 7 | | BM-1401 | 0.46 | 30 | 4 | | | |
| 8 | | DM-1001A | 0.46 | 7.5 | 6 | | | |
| 9 | | DM-1001B | 0.46 | 7.5 | 6 | | | |
| 10 | | EF-2612 | 0.22 | 0.2 | 4 | | | |
| 11 | | EF-2614 | 0.22 | 0.4 | 2 | | | |
| 12 | | EM-2401A | 0.46 | 37 | 4 | | | |
| 13 | | EM-2401B | 0.46 | 37 | 4 | | | |
| 14 | | EM-2401C | 0.46 | 37 | 4 | | | |

(End)

The next issue will also discuss “Data Sheet” (Single Table Format) of the “Template Design”.

If you have problems or requests and need solutions, please feel free to contact;
Eltechs Engineering & Consulting, Inc.
Mr. Kameda E-mail address: etap@eltechs.co.jp