

## Let’s make full use of e-DPP / ETAP-DPP.

### “Template Design” (Topic #019)

#### Part 2: User Defined Data Sheet

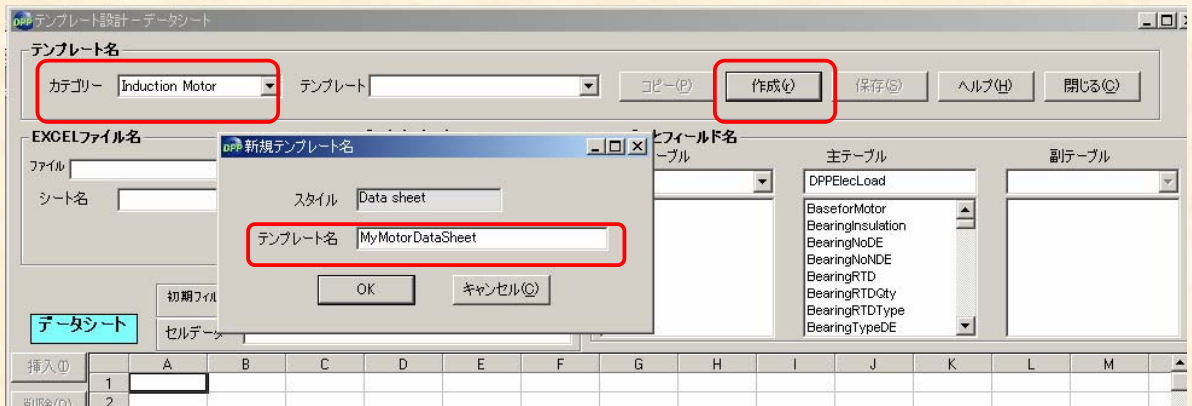
Previous Topic #18 discussed how to create “Schedule Sheet” from “Template Design” which is one of the powerful e-DPP features. This issue discusses a simple template for “Data Sheet” as “Template Design Part 2.

At first, similar to the template for “Schedule sheet”, create EXCEL sheet for simple Motor Data Sheet as below figure. There are 5 definition items which is the same as previous. However, as the previous issue is for Schedule Sheet, there are multiple lines output in a page. On the other hand, the Data Sheet has the format which has one item output per one page.

Once you create, save EXCEL with any name.

	A	B	C	D	E	F
1						
2		PROJECT TITLE :				
3						
4		MOTOR ID				
5						
6		KV				
7						
8		OUTPUT				
9						
10		POLE				
11						
12						

Next, run the e-DPP and select “Data Sheet” from the menu “Template design”. Select “Induction Motor” from “Category” at left above of the below display and click Create button at right. Then enter “MyMotorDataSheet” in the Template Name and click OK. (This time also uses sample data “Example 2 Project”. Displays are all from Japanese e-DPP version 1.4.2.

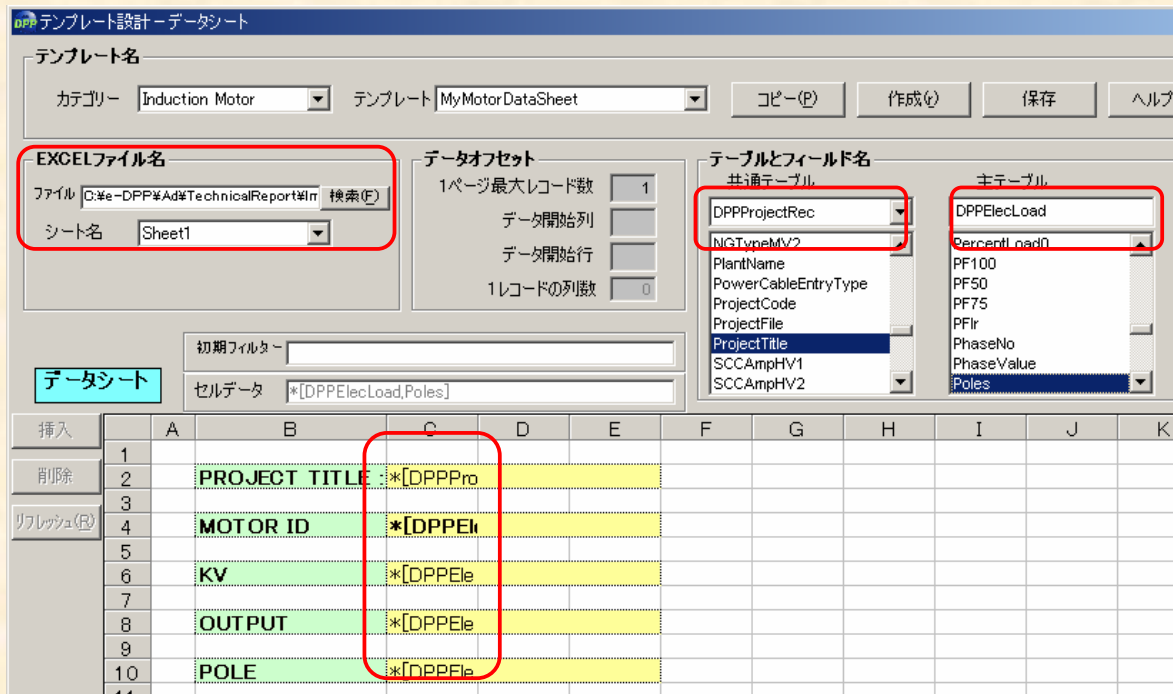


(Continue to next page.)

Retrieve EXCEL file just created at the EXCEL file name box. Select “Sheet 1” if you did not specify sheet name when you created EXCEL file. Select “DPPProjectRec” from pull down list of the common table and drag field “ProjectTitle” and drop to cell number [C2] of the “Data Sheet” part.

Similarly, Drag 4 fields of main table “DPPElecLoad” and drop to the data sheet part.

Cell	Field	Contents
C4	ID	(Motor No.)
C6	KV	(Rated voltage)
C8	HP	(Rated Output)
C10	Poles	(No. of poles)



Once above operations complete, push “Save” button => “Close” button to close “Template Design”. Then execute e-DPP Menu “Edit” => “Induction Motor” to select “MyMotorDataSheet” which is a User Defined Template just created. When you open the template, Edit Display for 4 fields only you selected will appear.

(Continue to next page.)

	Lock	ID	KV	HP	Poles
1	<input type="checkbox"/>	AM-2001	0.4600	22.0000	2.0000
2	<input type="checkbox"/>	BM-1401	0.4600	30.0000	4.0000
3	<input type="checkbox"/>	DM-1001A	0.4600	7.5000	6.0000
4	<input type="checkbox"/>	DM-1001B	0.4600	7.5000	6.0000
5	<input type="checkbox"/>	EF-2612	0.2200	0.2000	4.0000

Then, if you push “EXCEL(T)” button and click OK in the Output Condition Setting Display, following database contents will be displayed one by one format on the EXCEL sheet you have made.

	A	B	C	D	E
1					
2		PROJECT TITLE :	電気設備データ処理		
3					
4		MOTOR ID	AM-2001		
5					
6		KV	0.46		
7					
8		OUTPUT	22		
9					
10		POLE	2		
11					
12					

This issue also discussed a very simple method to create template. Please try creating your own practical data sheet.

(End)

The next issue will discuss the third format of “Template Design” which is “Schedule Type Data Sheet (Mixed Format)”.

If you have problems or requests and need solutions, please feel free to contact;

**Eltechs Engineering & Consulting, Inc.**

**Mr. Kameda** E-mail address: [etap@eltechs.co.jp](mailto:etap@eltechs.co.jp)